



Vačkové spínače řady S 10 – 160 J

Cam switches series S 10 – 160 J

Vačkové spínače S...JT

- spínač s tlačítkem blokujícím páčku v poloze „0“

Cam switches S...JT

- switch with lever without frontal plate switch with push button which blocks lever in zero position

S 10, 16, 25 JT



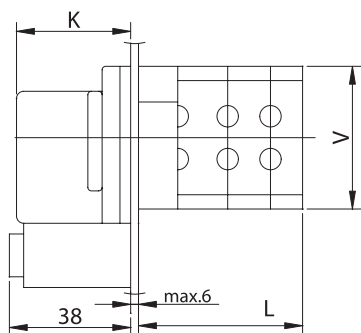
S 32, 63 JT



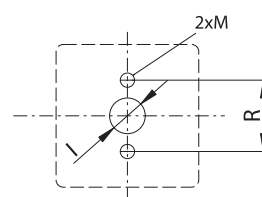
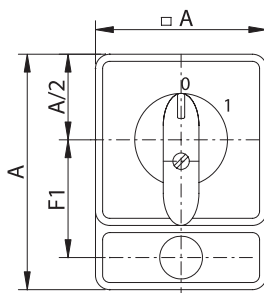
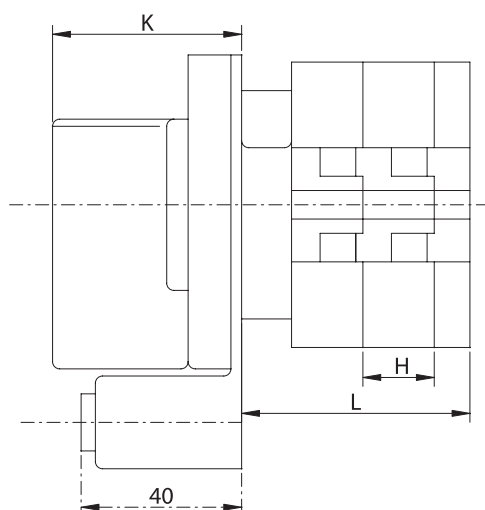
S 100, 160 JT



S 10, 16, 25, 32, 63 JT



S 100, 160 JT



Upevnění na panel
Clamping to the panel (front mounting)